



GMT MONTHLY MEMBERSHIP PROGRESS REPORT

Results as of: 6/30/2019

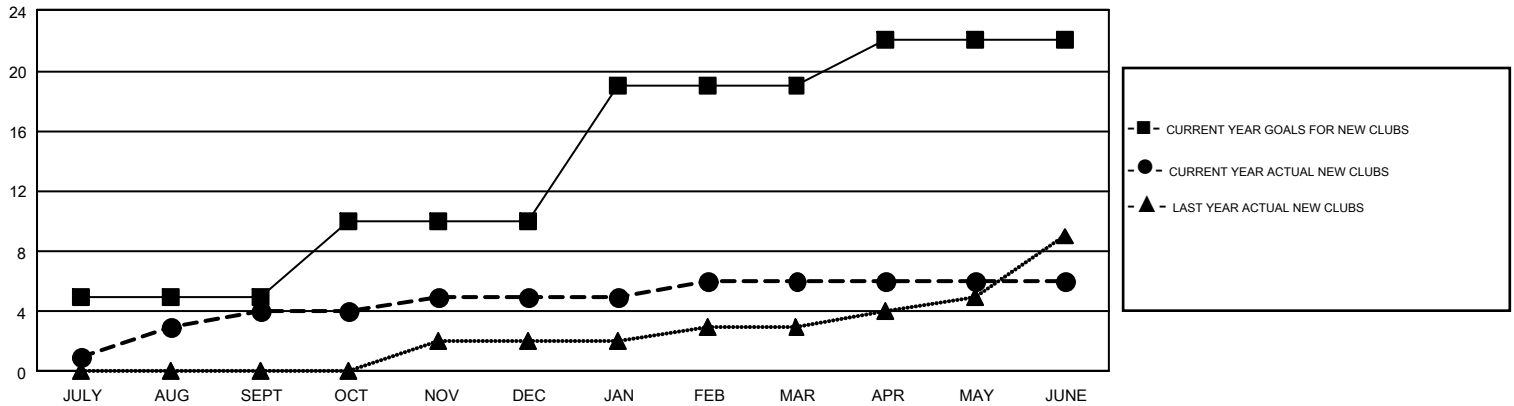
GMT Constitutional Area 2, Group B

GMT: CHRIS LEWIS

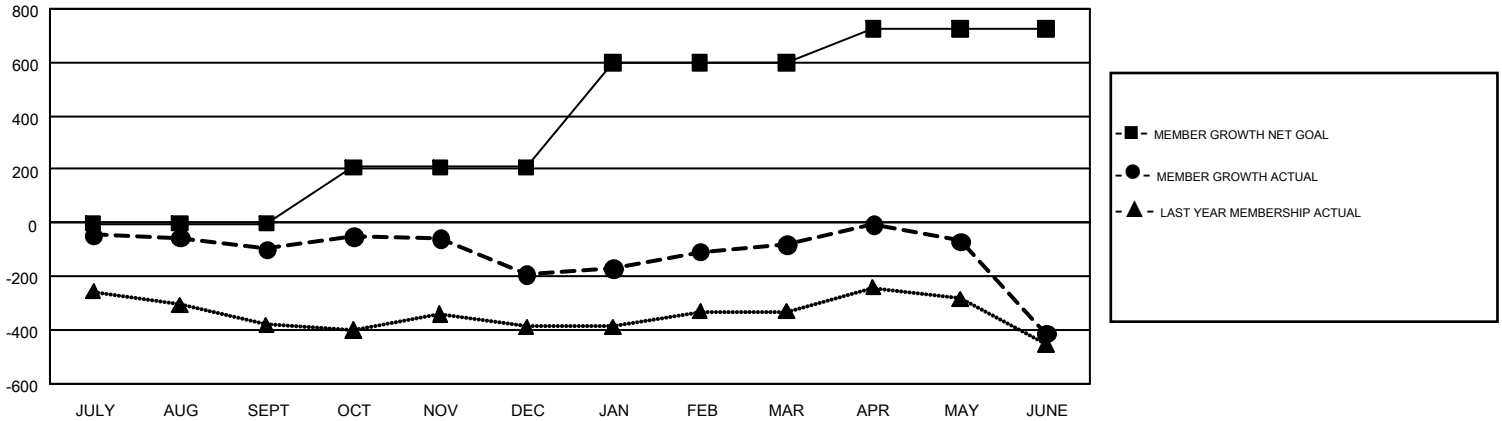
REPORT DOES NOT INCLUDE CLUBS IN UNDISTRICTED AREAS.

Clubs				Members			
RESULTS FOR 2018-2019				RESULTS FOR 2018-2019			
QUARTER	NEW CLUB GOAL	NEW CLUBS	DROPPED CLUBS	QUARTER	MEMBER GROWTH NET GOAL	MEMBER GROWTH ACTUAL	DROPPED MEMBERS ACTUAL (including transfers)
JULY/AUG/SEPT	5	4	2	JULY/AUG/SEPT	-2	365	405
OCT/NOV/DEC	5	1	3	OCT/NOV/DEC	210	584	622
JAN/FEB/MAR	9	1	1	JAN/FEB/MAR	392	580	408
APR/MAY/JUNE	3	0	4	APR/MAY/JUNE	125	574	844

GOALS AND ACTUAL NEW CLUBS CUMULATIVE



GOALS AND ACTUAL MEMBERS CUMULATIVE



DROPPED CLUBS: 10	519 CLUBS OF 777 ADDED 1 OR MORE NEW MEMBERS	<u>GENDER DISTRIBUTION</u>
<u>DROPPED MEMBERS</u>	CLICK HERE FOR CUMULATIVE MEMBERSHIP DATA	MALE 12,713 (68.80%)
DECEASED 305		FEMALE 5,766 (31.20%)
CLUB CANCELLED 72		TOTAL FAMILY UNIT MEMBERS 3,394
OTHER 1,901		FAMILY MEMBERS PAYING HALF DUES 1,736
TOTAL 2,278		